



FLUE INSTALLATION ADDENDUM FOR THE
Tudor NHREV Balanced Flue Water Heater
Operating & Maintenance Manual
For Models 18, 36 & 60



MHS Boilers Ltd
3 Juniper West
Fenton Way
Basildon Essex
SS15 6SJ

01268 546700 Telephone 01268 888250 Fax

WWW.MHSBOILERS.COM

L157.2

Fitting the Flue to the Appliance.

Items to Carry Out Before Making the Water Connections.

Fit the gasket and the connection box to the flue hood that is provided with the appliance, using the six M5 x 20mm screws supplied (fig. 1)

Place the assembled hood as above on the appliance, turning it so that the air pipe connection is turned towards the fan on the gas unit. Fasten the hood using the four fastening springs and site the device at the position selected.

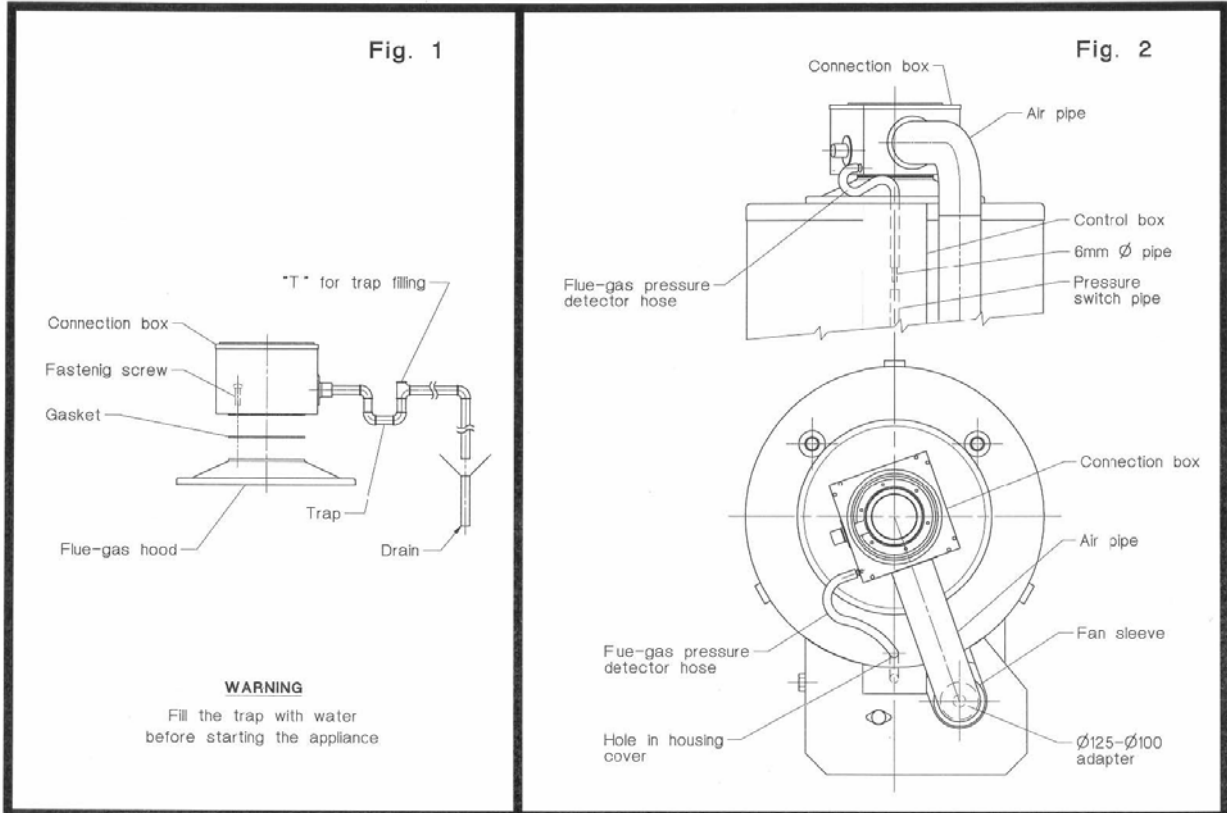
Connect the **flue-gas pressure detector hose**, to be found in the flue-gas hood box, to the fitting on the connection box. **The flue-gas pressure detector hose** must be passed through the hole provided on the housing cover and, later, must be connected to the hose from the pressure switch, in the control panel, using the piece of 6mm Ø metal pipe inserted in the flue-gas pressure detector hose (fig.2). **With this type of flue-gas exhaust, the metallic pressure take-off tube, to be found inside the control panel, must not be used.**

Connect the condensate collector outlet on the connection box to a drain, **with the essential inclusion of a trap that must be filled with water** (fig. 1).

Install the ø125 in - ø100 out adapter on the burner sleeve of the gas train.

Install the air pipe between the connection box and the fan sleeve adapter as fitted before (fig. 2).

IMPORTANT. For correct and safe operation of the appliance, it is imperative that the installation is carried out by a competent person following all current legislative and best practices.



Fitting a Horizontal Coaxial Flue to the Appliance.

Installation of horizontal coaxial flue system type C13 (fig. 3)

Make a hole, of adequate size for the air intake/exhaust pipe, in an outside wall near to the appliance.

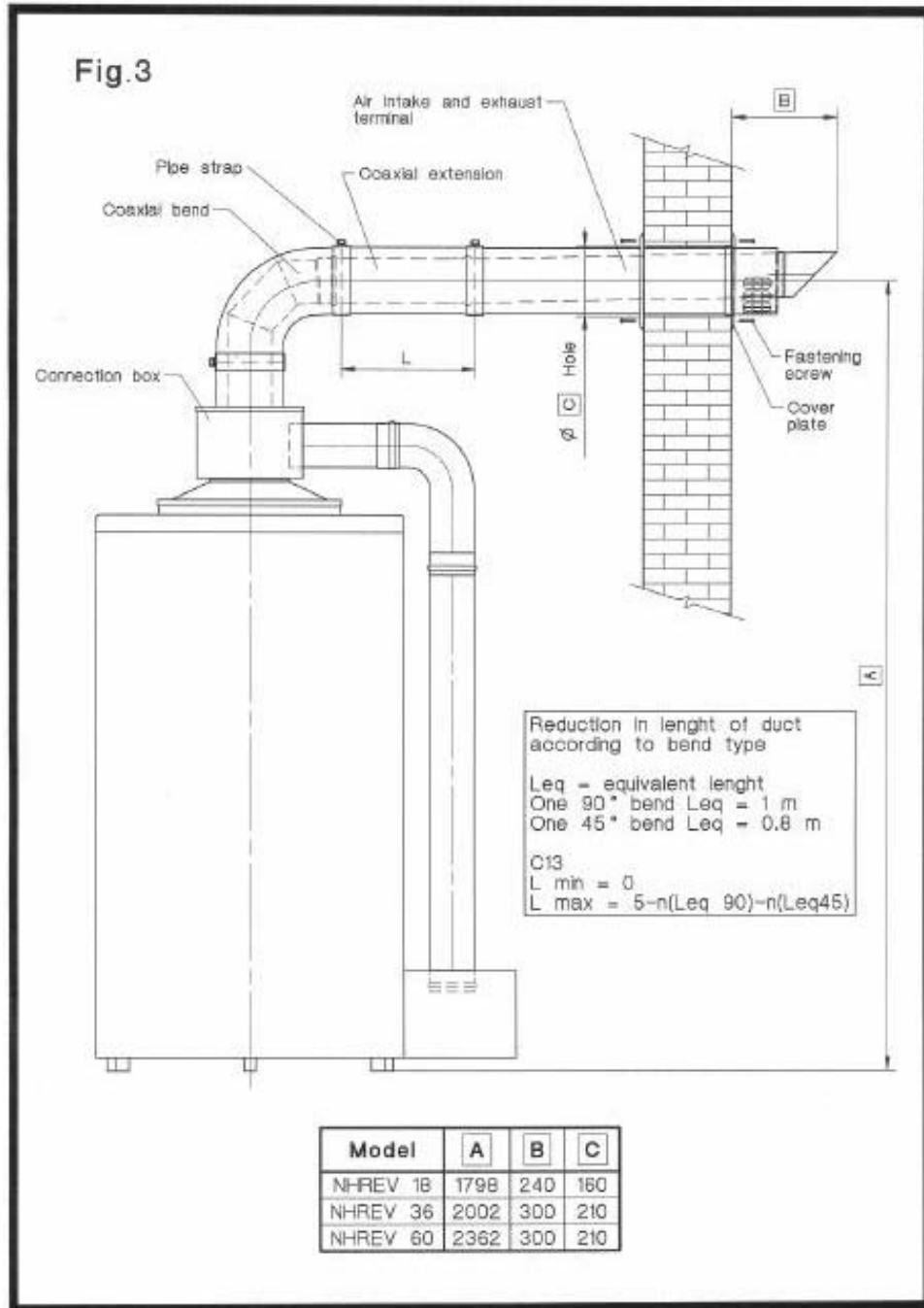
Insert the intake/exhaust pipe into the hole and fix the two cover plates, one internally and the other externally, using the eight screws and wall plugs provided.

Attach the coaxial bend to the connection box, turning the bend towards the hole in the wall.

Make the connection between the bend and the intake/exhaust terminal, using if necessary coaxial extensions. These are available in lengths of 1000mm and 500mm;

the latter can be cut to size. **The overall length of the coaxial flue assembly must not exceed five metres.(5 m).** The seal between successive lengths of pipe is made by gaskets and pipe straps.

The flue assembly must be adequately supported, with at least one support per length.



Fitting a Vertical Coaxial Flue to the Appliance.

Installation of vertical coaxial flue system type C33 (fig. 4).

Install the flashing tile provided onto the roof. The type of tile required will depend on the pitch of the roof and on the diameter of the intake/exhaust pipe.

Insert the vertical intake/exhaust pipe into the hole.

Make the connection between the connection box and the vertical intake/exhaust terminal, using if necessary coaxial extensions. These are available in lengths of 1000mm and 500mm; the latter can be cut to size. **The overall length of the coaxial flue assembly must not exceed five metres.(5 m).** The seal between successive lengths of pipe is made by gaskets and pipe straps.

The flue assembly must be adequately supported, with at least one support per length.

